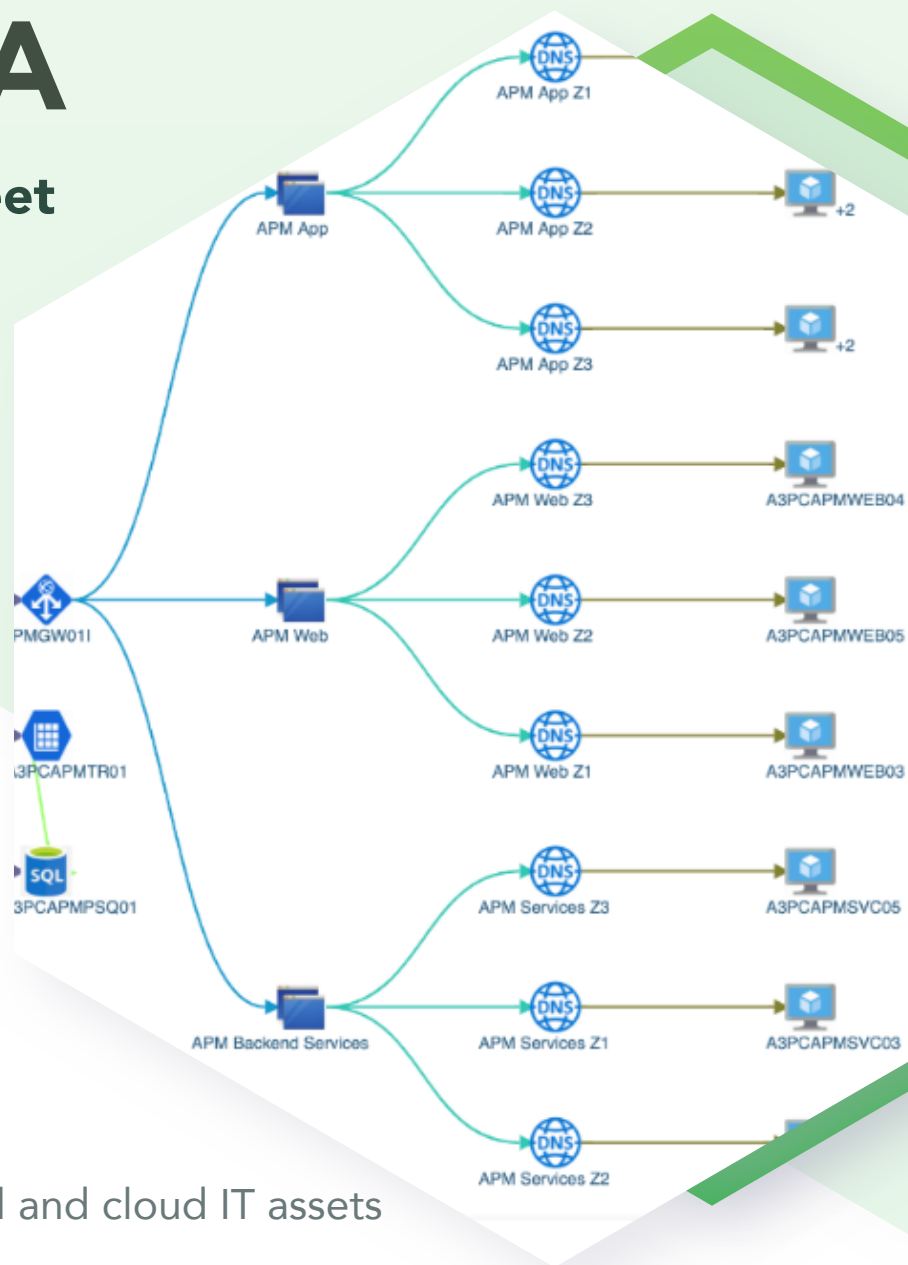




Virima SaaS Data Sheet



Highlights

- Discovery for physical, virtual and cloud IT assets
- Work from Anywhere solution for remote PCs
- Visualized CMDB experience
- Service mapping automation
- Virima Visual Impact Display (ViVID™)
- IT Asset Management (ITAM)
- Autonomic Social Discovery™
- Affordable SaaS licensing with high-touch support
- Codeless integrations with ITSM, event management, and much more

Virima: An unbeatable solution for operational efficiency

Only Virima combines the convenience of SaaS deployment and accessibility with the security and high performance of on-premise and cloud discovery, CMDB and ITAM automation, dynamic Service Mapping and the power of the Virima Visual Impact Display. With an exceptional degree of automated data collection and visualizations, Virima offers affordability with modular licensing options and low total cost of ownership.

Virima is available as a standalone solution or can be seamlessly paired with leading ITSM platforms to form a robust, cost-effective and easy to manage ITOM platform.

Complete discovery for hybrid IT

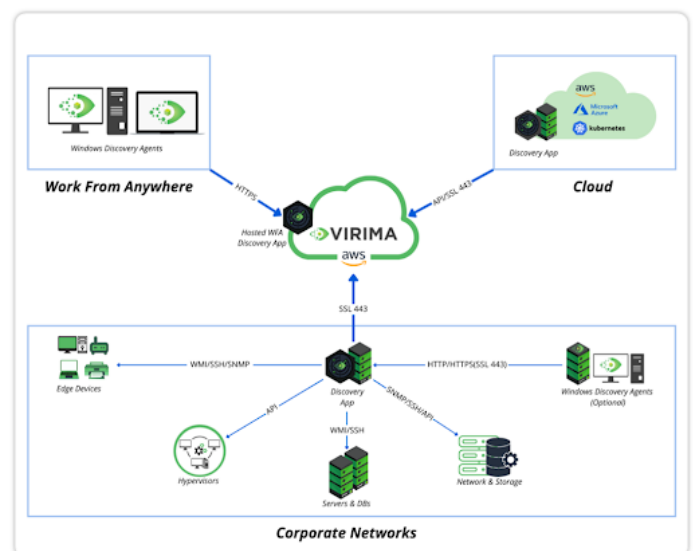
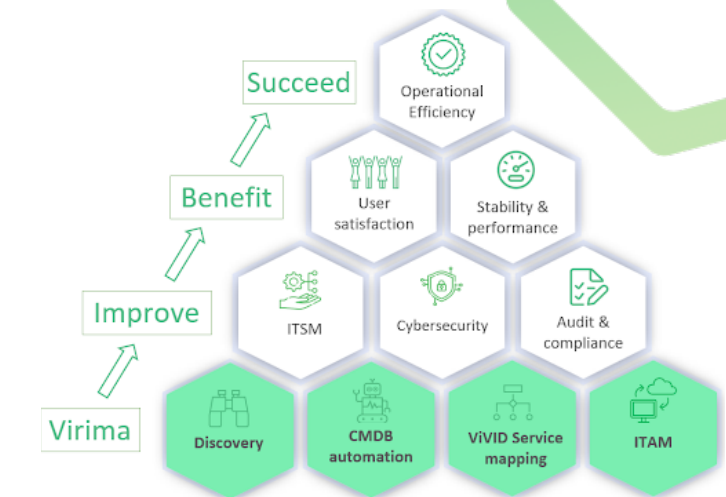
With its 100+ probes and integration with industry-leading cloud providers, such as AWS and Azure, Virima's IT Discovery allows you to automatically and repeatedly detect thousands of physical and virtual assets, hundreds of hardware configurations, and any installed software across Windows, Linux, Unix, and Mac operating systems.

Discovery highlights

- Hundreds of physical and virtual devices
- Thousands of hardware configurations
- Attributes for Windows, Linux, Unix, and Mac OS
- Installed software and certificates
- Hardware and software relationships
- Communication patterns

Windows agent

- Optional Discovery Agent for Windows server and desktop OS
- Flexible delivery and auto-update options
- Full-time monitoring of configuration changes and software usage metering
- Alternative for agentless discovery concerns
- Key component of Virima's Work-From-Anywhere solution



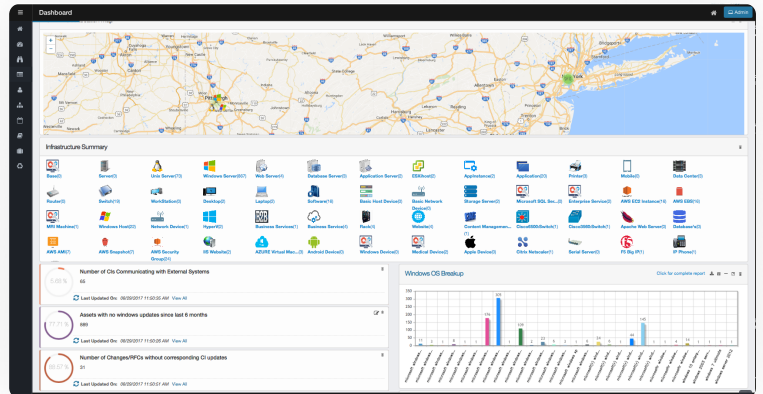
Agentless discovery

- Run agentless discovery from Discovery App servers under your control
- Credentials stay local, encrypted and secure
- Scan parameters configurable via secure browser-based UI
- Over 140 extendable probes for broad device and OS support
- Set and forget scan scheduling
- Maintain CMDB health with detailed logs and reports

CMDB: the single source of truth

CMDB is the foundation of effective ITSM, ITAM and ITOM and no other solution offers a more automated, organized and visual CMDB experience than Virima. Run it standalone or tightly integrated with many popular ITSM platforms to achieve true CMDB success.

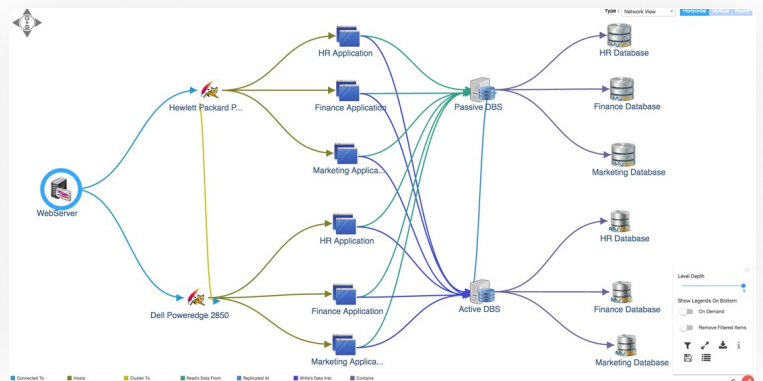
- Maintained through discovery
- Certified for Service Asset and Configuration Management
- Automated CMDB maintenance
- Provides trustworthy and accurate data
- Visualizes assets and relationships
- Codeless bidirectional integration with popular ITSM platforms
- Multi-tenant portal for segmented/divisional CMDBs and MSPs



Automated service mapping

Service Mapping eliminates the guesswork of how your major applications, websites and enterprise services function through dynamic relationship and dependency maps automatically generated from the discovery data. Service Mapping views include:

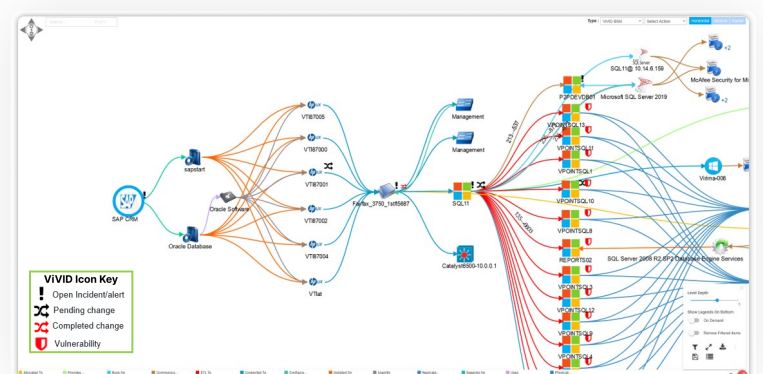
- Business service mapping
- Infrastructure relationships
- Application and website dependencies
- Communication flows
- Network topologies
- Cloud and virtual architectures



Virima Visual Impact Display (ViVID™)

With service map overlays of ITSM records and vulnerabilities, ViVID is a heads-up display and collaboration tool for IT and SecOps providing unprecedented impact analysis to help improve MTBF, MTTR and vulnerability prioritization by answering questions like:

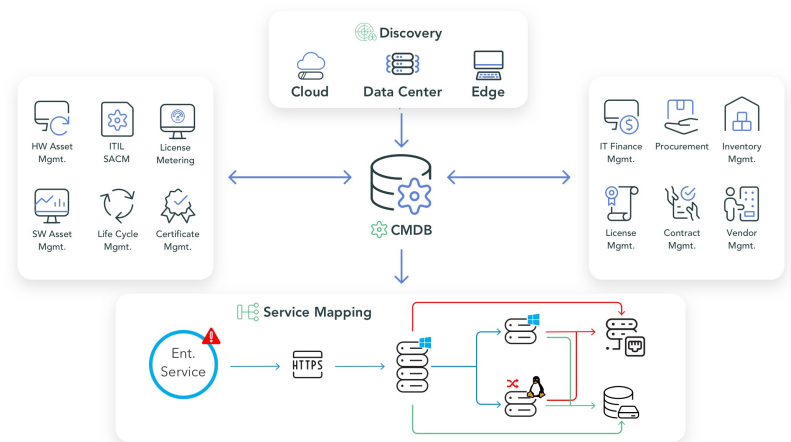
- What is the risk exposure to making this change?
- Who are the stakeholders to this change or incident?
- What recent change may be the root cause of this service outage?
- What services could be impacted by this open incident or alert?
- Which critical assets have vulnerabilities?
- Where are the weak links in my business services?



IT asset management

ITAM is equipped to handle complete lifecycle management of your organization's distributed hardware and software inventory helping you operate more efficiently, cost-effectively and securely.

- Work-from-anywhere agent
- Streamline audit compliance reporting
- Seamless system integrations
- Insightful asset reports & dashboards
- Warranty & license management
- Certificate management
- Vendor contract management



Autonomic Social Discovery™

Autonomic Social Discovery is an innovative feature that automates human intelligence gathering, providing a deeper understanding of your IT and cyber asset inventory that can't be learned through discovery.

- Human discovery for things like SLA's, contracts, ownership, status, EOL, policies
- Ensure CMDB and ITAM completeness
- Multi-channel task assignment
- Tasks can be easily assigned to others
- System adapts and learns who best to provide missing data

Secure, scalable, resilient SaaS

- Hosted in multiple AWS regions and availability zones
- Architected from ground up for true multi-tenancy
- Easily scales to meet demands
- AICPA SOC 2 Type II certified business processes
- Strong data encryption and availability assurance



Extensive physical and virtual coverage

Virima supports a wide swath of data center, cloud, network, edge devices and software including but not limited to:

Data Center

Servers
Hypervisors
Storage
Databases
Applications

Network

Switches
Routers
Firewalls
Load balancers
Wireless

Edge

Desktops
Printers
VoIP handsets
IoT
Hand-helds

Cloud

Virtual private networks
Elastic computing
Load balancers/App Gateways
Containers, storage & Databases
Server OS & applications

Sample hardware details

- Manufacturer & model number
- Serial number
- CPU, RAM, HD, BIOS
- Network adapters
- Peripherals
- Host name
- Listeners, processes, services

Sample software details

- Operating system
- Off-the-shelf software
- Custom applications
- Websites
- Patches
- Certificates
- Usage metering

Seamless integrations include



Get complete control of your IT estate with Virima!

[Request Demo](#)



info@virima.com



404 969 4180